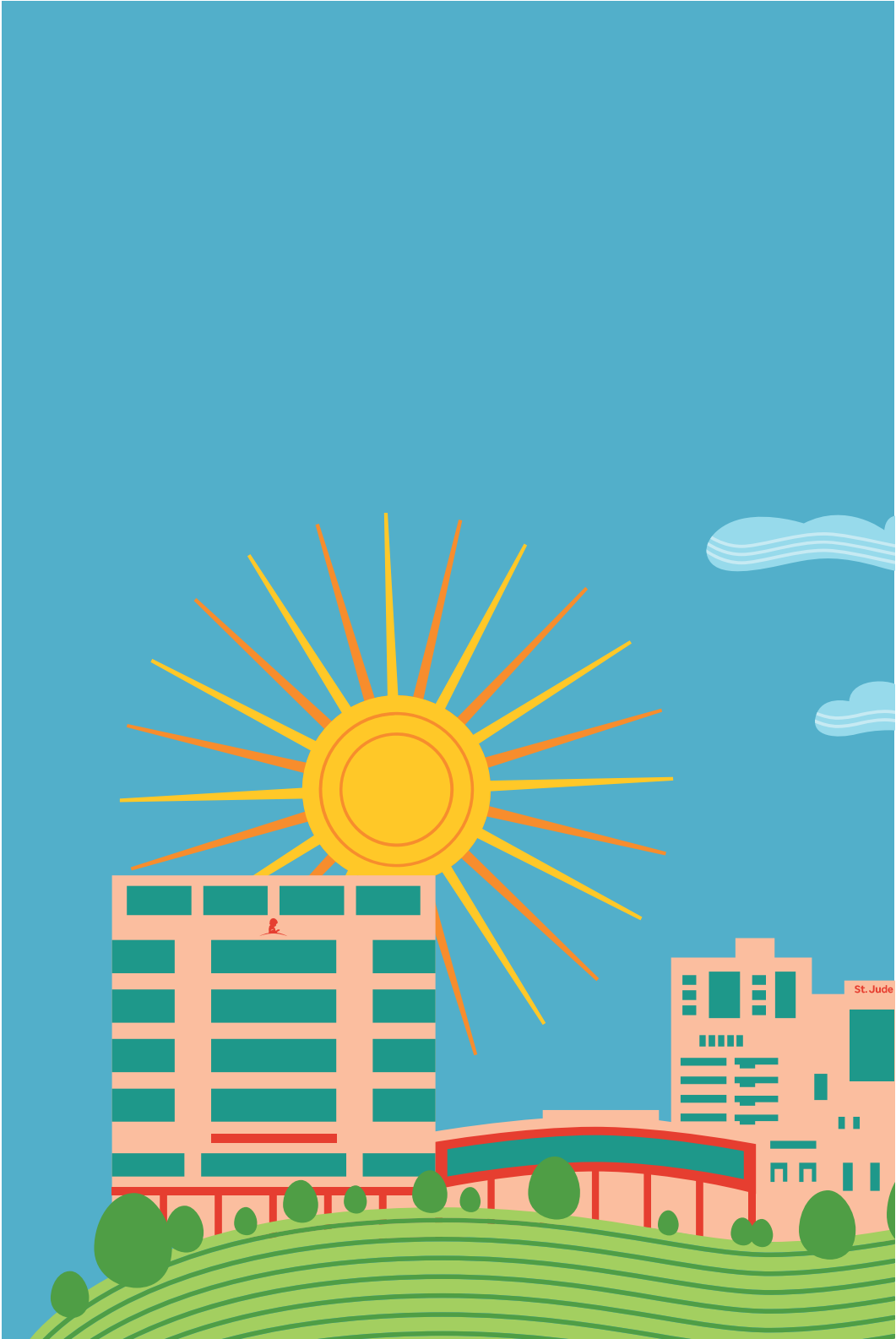


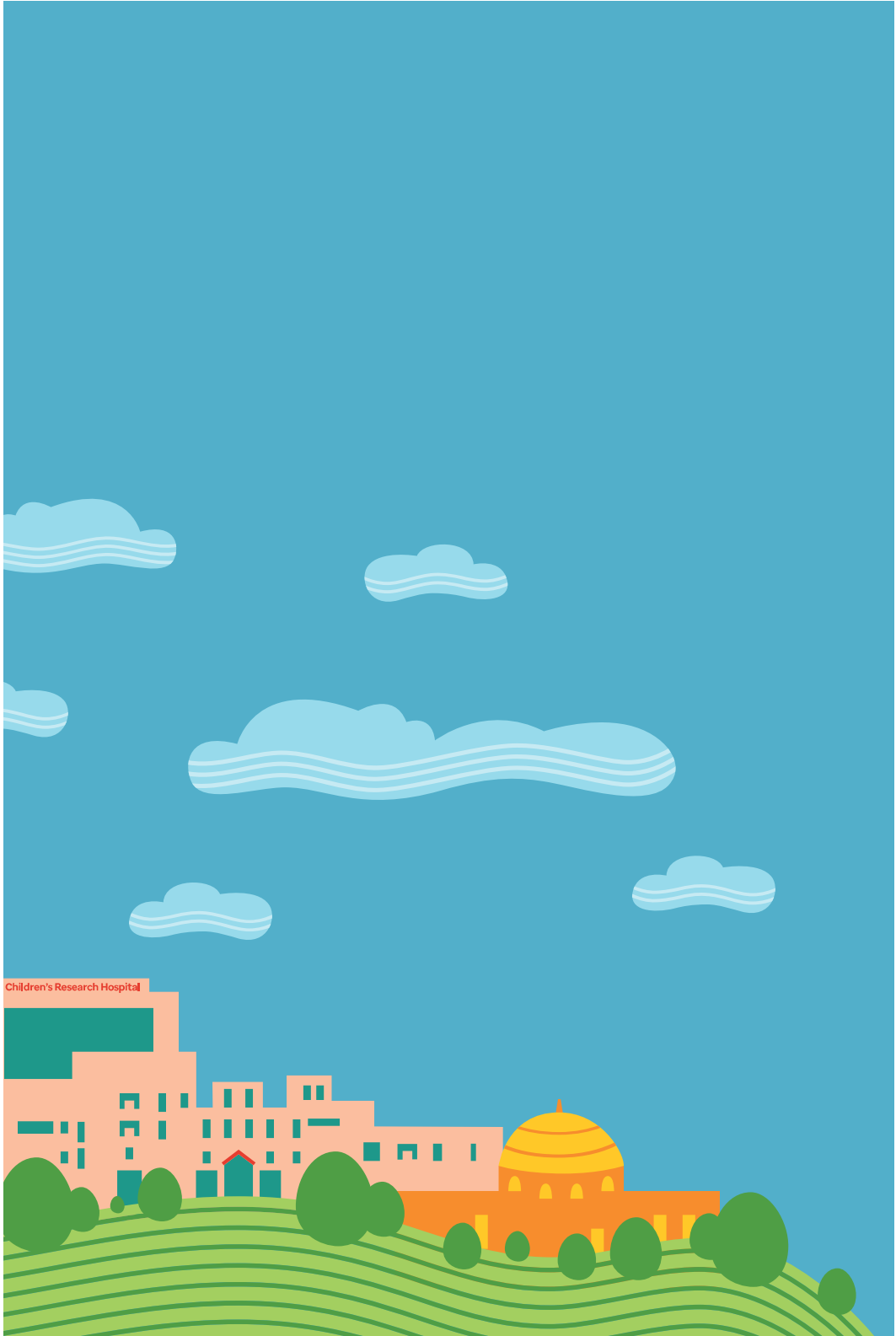


**Because of You**  
**The World is Bright**



St. Jude Children's  
Research Hospital  
**Survivor Guide**





## Dear St. Jude Patients and Families,

For more than half a century, St. Jude Children's Research Hospital has led the way in finding cures and saving children. The campus has changed quite a bit in that time, expanding and growing to make progress in our mission. Today, St. Jude covers more than 90 acres and has many buildings, along with nearly 5,000 employees.

None of this would be possible without our patients and their families. By taking part in St. Jude clinical trials, you've helped our doctors and scientists learn more about treating childhood cancer. Today, children with cancer are living longer and healthier lives thanks to discoveries made right here at St. Jude. Caring for you is a privilege—one we take very seriously. We are grateful to you for entrusting your care to us.

At St. Jude, we consider you a survivor from your first day as a patient. Each new day is a reason to celebrate. Some days are certainly more challenging than others, and life is not perfect. But no matter what happens, you'll always be part of our St. Jude family. We hope this box serves as a reminder of that appreciation.

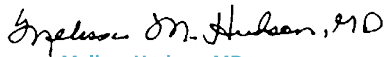
### **This year, your box contains the following items:**

- Annual survivor pin
- Milestone survivor pins for those reaching 5, 10, 25, 35 or 50 years of survivorship in 2019
- A decoration illustrating the St. Jude skyline to hang in a window, use as a holiday ornament or display year-round
- A booklet with the latest St. Jude news and updates, in addition to information you will find useful as a cancer survivor.

Thank you for allowing us to commemorate survivorship with you. Please visit [www.stjude.org/survivor-box](http://www.stjude.org/survivor-box) for more helpful information and tips about childhood cancer survivorship.

**Sincerely,**

  
**James R. Downing, MD**  
President and CEO  
St. Jude Children's Research Hospital

  
**Melissa Hudson, MD**  
Director, Cancer Survivorship Division  
St. Jude Children's Research Hospital



What did St. Jude look like when you were a patient?

HERE'S WHAT IT'S LIKE TODAY

About	90 acres	5,000 employees
7,820 patients treated each year	17 bed transplant service	77 inpatient beds
	8 bed ICU	3 operating rooms

Want to share photos or memories of your time as a patient?  
Email [publicprograms@stjude.org](mailto:publicprograms@stjude.org).

# HIGHLIGHTS OF THE PAST YEAR



## Proton therapy

We've treated 554 patients with proton therapy since 2015. St. Jude is home to the world's first proton therapy center solely for children. Proton therapy aims high-dose radiation at cancer cells and spares healthy cells. It is one of the most advanced and precise forms of radiation treatment.



## "Our St. Jude" patient app

Visiting St. Jude soon? With the official Our St. Jude app, patients can access schedules, travel and housing information, meet care team members, get directions around campus, and discover articles written by St. Jude experts. You can download the app from the Apple App Store or Google Play. It can be found by searching "Our St. Jude." If you have questions or concerns about the Our St. Jude app, please email [oursjsupport@stjude.org](mailto:oursjsupport@stjude.org).



## Together website

Survivors may face lifelong challenges related to cancer and its treatment. *Together* is a trustworthy resource where survivors and their families can learn about late effects, healthy lifestyles, school support, workplace topics and access to care. Powered by St. Jude Children's Research Hospital, *Together* is for anyone facing childhood cancer, from diagnosis to long-term survival.

**Visit: [together.stjude.org](http://together.stjude.org).**



## St. Jude Cloud

This platform offers scientists access to the world's largest public source of childhood cancer genomics data. More than 800 researchers from 400 institutions are using St. Jude Cloud to speed progress on curing cancer and other life-threatening diseases.



### **Tops in children's cancer**

*U.S. News & World Report* ranked St. Jude as one of the nation's top childhood cancer hospitals.



### **Beauty at every turn**

St. Jude added a 12,000-square-foot mural made of 1.2 million sequins. This colorful art shimmers outside the Kay Research and Care Center.



### **Preventing HPV-related cancers**

St. Jude is working to end cancers caused by the human papillomavirus (HPV). One out of every 4 people is infected with HPV. Vaccination can prevent the infections that cause HPV-related cancers. St. Jude is helping to boost vaccination rates in the U.S.



### **Highest ranking from NCI**

For the second time in a row, the National Cancer Institute awarded St. Jude the highest possible rank of "exceptional." St. Jude is the first and only NCI-designated Comprehensive Cancer Center devoted solely to children.



### **Working with WHO**

Around the world, nine in 10 children with cancer will not survive. To change that statistic, St. Jude partnered with World Health Organization. The goal is to raise cure rates in low- and middle-income countries from 20% to at least 60% for children with six of the most common cancers by 2030.

Please visit [www.stjude.org/survivor-box](http://www.stjude.org/survivor-box) for more helpful information and tips about childhood cancer survivorship.

# RESEARCH HIGHLIGHTS



St. Jude developed and produced gene therapy that cured babies with “bubble boy” disease.



St. Jude scientists studying childhood brain tumors made a discovery that offers a possible new way to treat Alzheimer’s disease.



The hospital led a study to find out how flu affects an infant’s immune system. This work may help scientists create a universal flu vaccine.



Here’s another reason to cover your cough or sneeze: St. Jude scientists revealed details of how flu and bacteria work together to promote infection.



St. Jude scientists found gene changes that are linked with a higher risk of T-cell acute lymphoblastic leukemia.



A recent study helped researchers understand the gene change that causes pontine gliomas. The discovery may help scientists design better therapies.



The hospital created one of the world’s largest collections of leukemia samples. Researchers worldwide can use this resource, which is called PROPEL.



A St. Jude study found gene changes linked to mixed phenotype acute leukemia. The work offers a basis to develop better therapies.



St. Jude scientists found that a financial checkup should be a part of health screenings for childhood cancer survivors.



Research at St. Jude uncovered gene changes that cause familial monosomy 7 syndrome. Scientists found the condition sometimes resolves without treatment.



# WHAT'S ON THE HORIZON?



## **New patient housing**

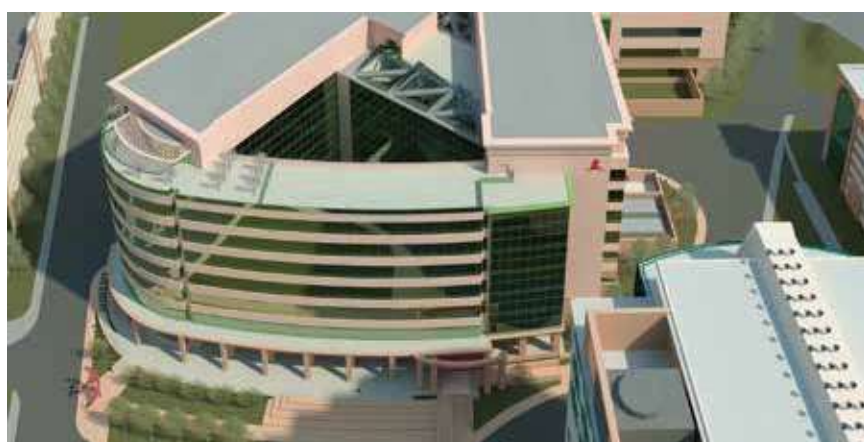
St. Jude completed designs for a new patient housing facility. It will feature 160 rooms, short-stay suites, two- and three-bedroom apartments, a playground, community areas and dining space.



## **Family Commons and school**

In 2021, the St. Jude Family Commons should open in the Patient Care Center. The Family Commons will be open only to patients and families. They will be able to shop, snack, make travel plans and handle basic needs. An enhanced 10,895-square-foot school will also be offered in this area. The new school will feature St. Jude science experts and will offer exciting classes for patients.

Please visit [www.stjude.org/survivor-box](http://www.stjude.org/survivor-box) for more helpful information and tips about childhood cancer survivorship.



### **Advanced research center**

Set to open in 2021, this building will be a hub of scientific interaction and discovery. The 625,000-square-foot building will include eight floors of labs and scientific space. It is one of the largest active research construction projects in the U.S.

### **Keep up with St. Jude news and stories!**

Subscribe to St. Jude *Promise* magazine and be sure to follow [@stjuderesearch](#) on Twitter, Facebook and Instagram.