



# MATA Detours for 2025 St. Jude Memphis Marathon

Saturday, December 6, 2025 at 7:00 AM to 3:00 PM

# 2025 St. Jude Pre-Marathon Detour Map

## Effective:

Friday, December 5, 2025, at  
12:00 PM to 11:00 PM

### Route 36 Outbound

Left on Shadyac  
Left Second, Right A.W. Willis  
Right on Danny Thomas Left on Poplar  
Right on Manassas Left on Union  
Continue regular route

### Routes 34 Inbound

West on Vance,  
Right on Walnut Left  
on Union Right on  
Danny Thomas  
Left A.W. Willis  
Into Hudson Center

### Route 1

Inbound West  
on Union  
Right Danny  
Thomas  
Left Poplar  
Right Third  
over regular  
route

### Route 36 Inbound West on Union

Right on Manassas Left on Poplar  
Right on Danny Thomas, Left A.W. Willis  
Left Hudson Center

### Route 57 Outbound

Left on Shadyac, Left on  
Second, Right A.W. Willis, Right  
Danny Thomas, over regular  
route

### Route 1

outbound  
South on  
Second  
Left on Poplar  
Right Danny  
Thomas  
Left Union  
over regular  
route

### Routes 34 Outbound

Right A.W.  
Willis  
Right on Danny  
Thomas  
Left Union Right  
on Manassas  
Left on Vance  
Continue regular route

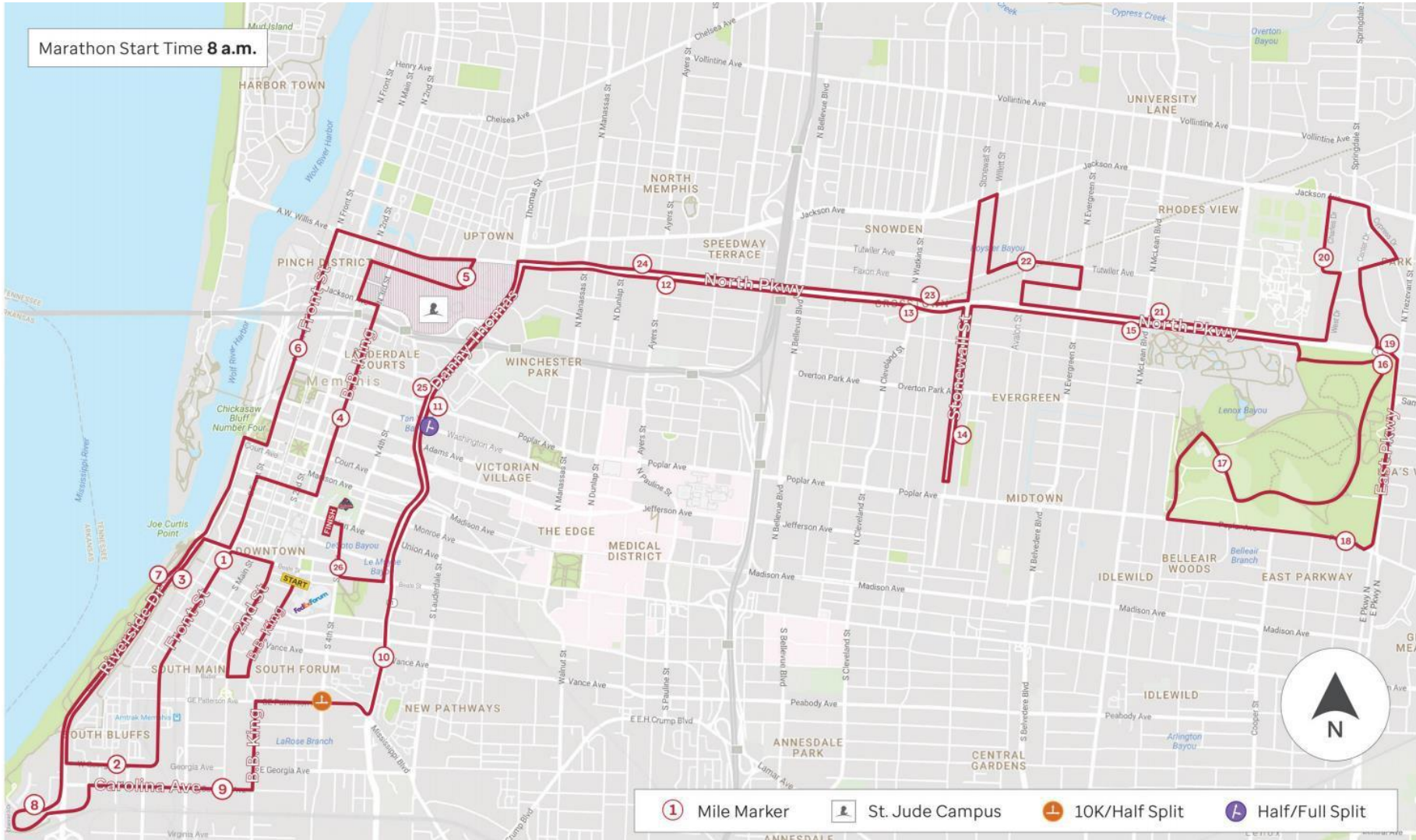
### Route 57 Inbound

North B.B. King, Right  
Vance  
Left Danny Thomas  
Left A.W. Willis  
Into Hudson Center



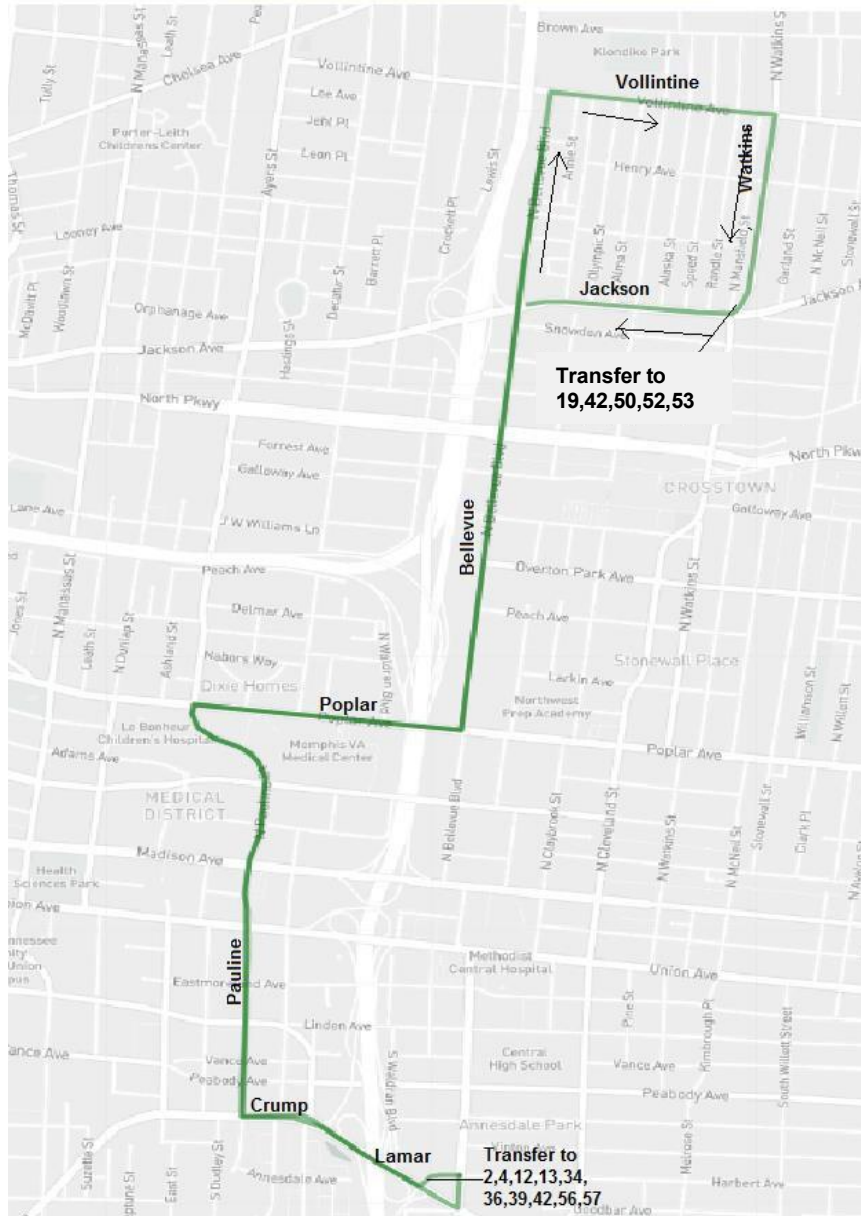
# 2025 St. Jude Marathon Course Map

**Effective:**  
Saturday, December 6, 2025 at 7:00 AM to 3:00 PM



# St. Jude Marathon Detour

## Lamar/Jackson Shuttle



### Effective:

Saturday, December 6, 2025 at 7:00 AM to 3:00 PM

### Directions:

Start at Harbert and Bellevue  
 Right on Bellevue  
 Right on Lamar which becomes Crump  
 Right on Pauline  
 Right on Poplar  
 Left on Bellevue  
 Right on Vollintine  
 Right on Watkins  
 Right on Jackson  
 Left on Bellevue  
 Right on Poplar  
 Left on Pauline  
 Left on Crump  
 Left on Harbert

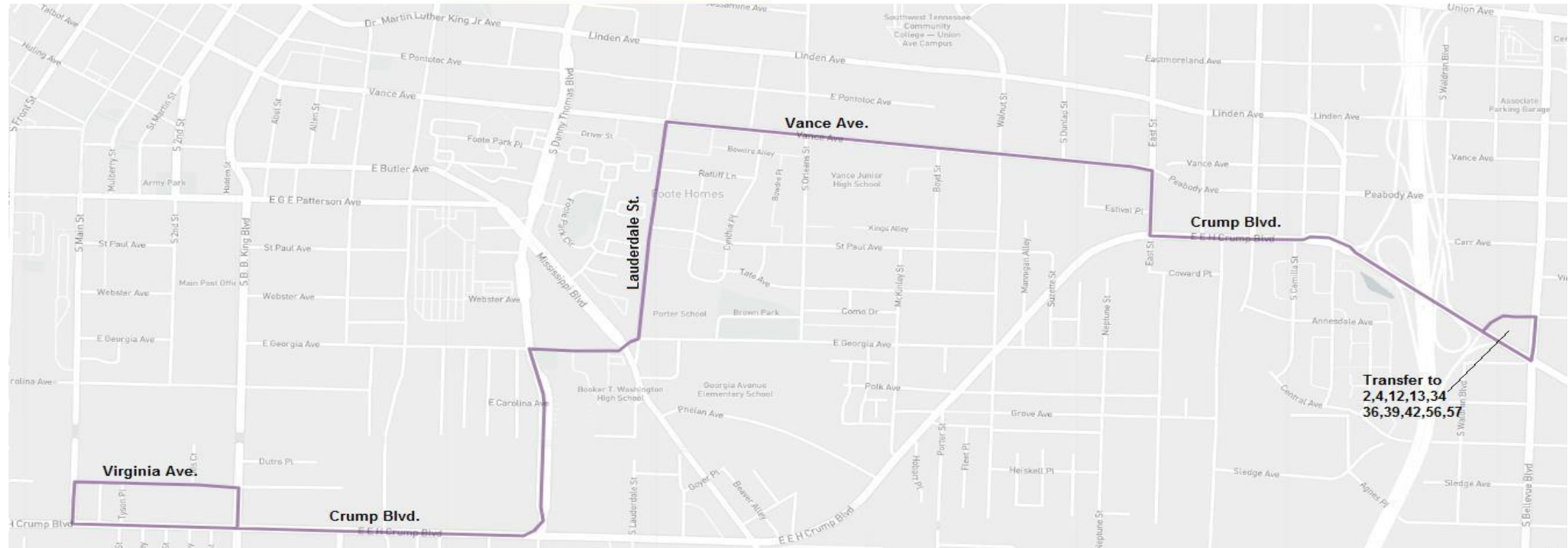
**Lamar/Jackson Shuttle Bus will pick up Lamar and Bellevue and Watkins and Jackson**

### Connecting routes:

**1,2,4,12,13,19,34,36,39,42,50,52,53,57**

# St. Jude Marathon Detour

## Downtown Shuttle



**Effective:** Saturday, December 6, 2025 at 7:00 AM to 3:00 PM

**Directions:** Start at Harbert and Bellevue, Right on Bellevue, Right on Lamar which becomes Crump, Right on East, Left on Vance, Left on Lauderdale, Right on Georgia, Left on Danny Thomas, Right on Crump, Right on Main, Right on Virginia, Right on B.B. King, Left on Crump, Left on Danny Thomas, Right on Georgia, Left on Lauderdale, Right on Vance, Right on East, Left on Crump, Left on Harbert

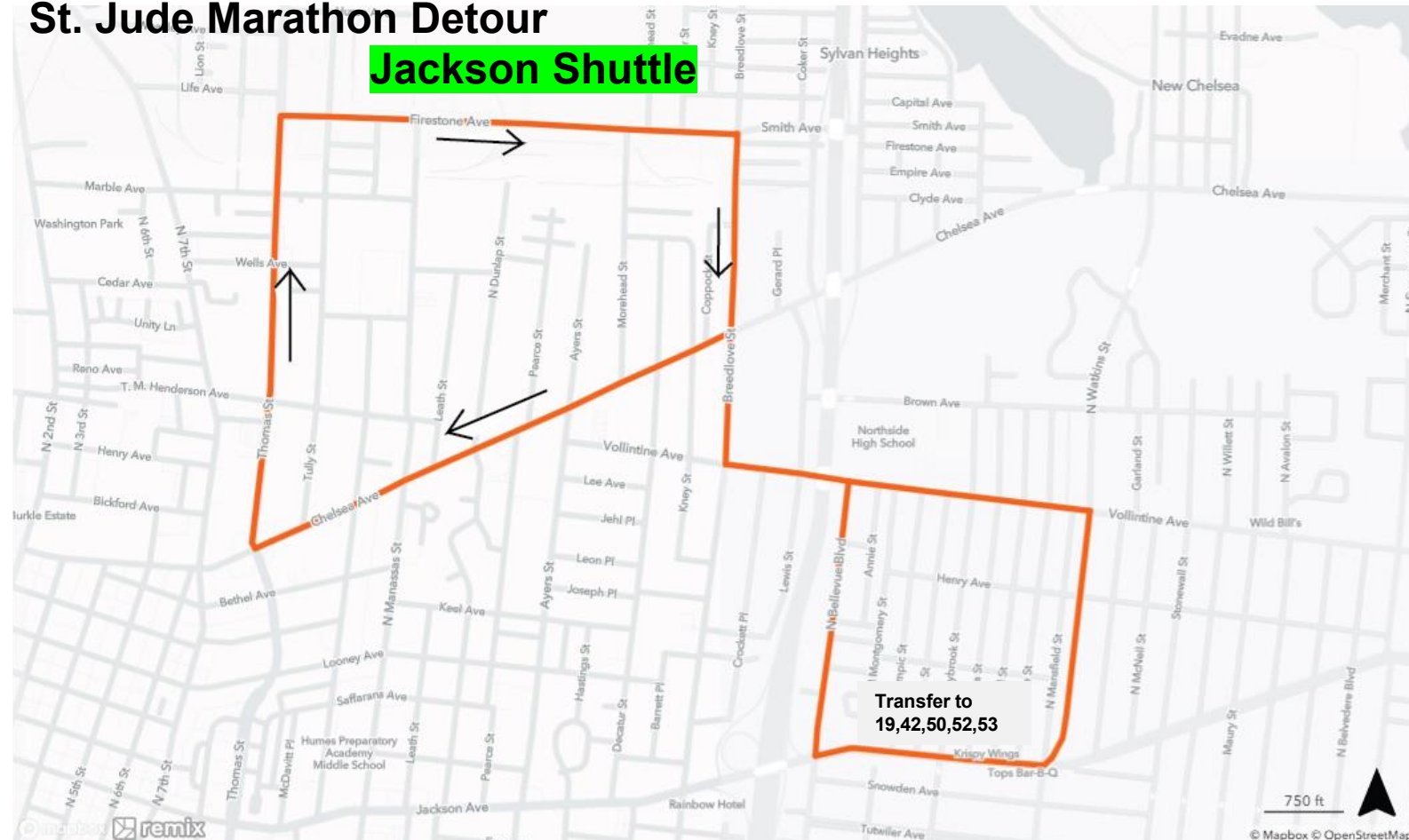
**Downtown Shuttle Bus will pick up at Lamar and Bellevue**

**Connecting routes: 1,2,4,12,13,34,36,39,42,57**



# St. Jude Marathon Detour

## Jackson Shuttle



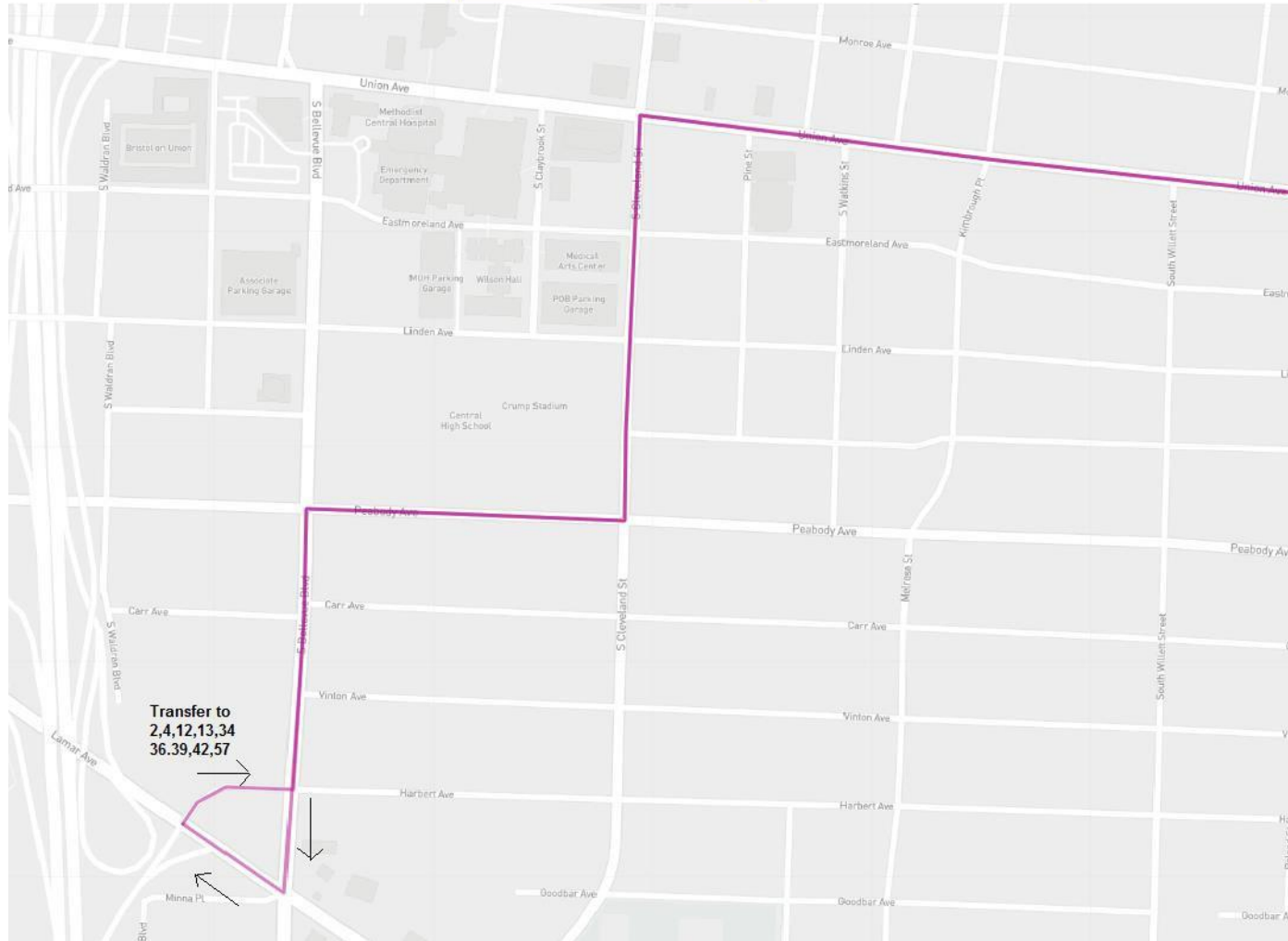
**Effective:** Saturday, December 6, 2025 at 7:00 AM to 3:00 PM

**Directions:** Start at Chelsea at Danny Thomas, Right on Firestone, Right on Breedlove, Left on Vollintine, Right on Watkins, Right on Jackson, Right on Bellevue, Left on Vollintine, Right on Breedlove, Left on Chelsea, End at Chelsea at Danny Thomas

**Jackson Shuttle bus will pick up at Danny Thomas and Chelsea and Watkins and Jackson Connecting routes:**  
**8,11,19,40,42,50,52,53**

# St. Jude Marathon Detour

## Route 1 Detour



**Effective:** Saturday,  
December 6, 2025 at 7:00 AM  
to 3:00 PM

### Directions:

#### Route 1 Outbound

Start at Harbert and Bellevue  
Left on Bellevue  
Right on Peabody  
Left on Cleveland  
Right on Union  
Continue regular route

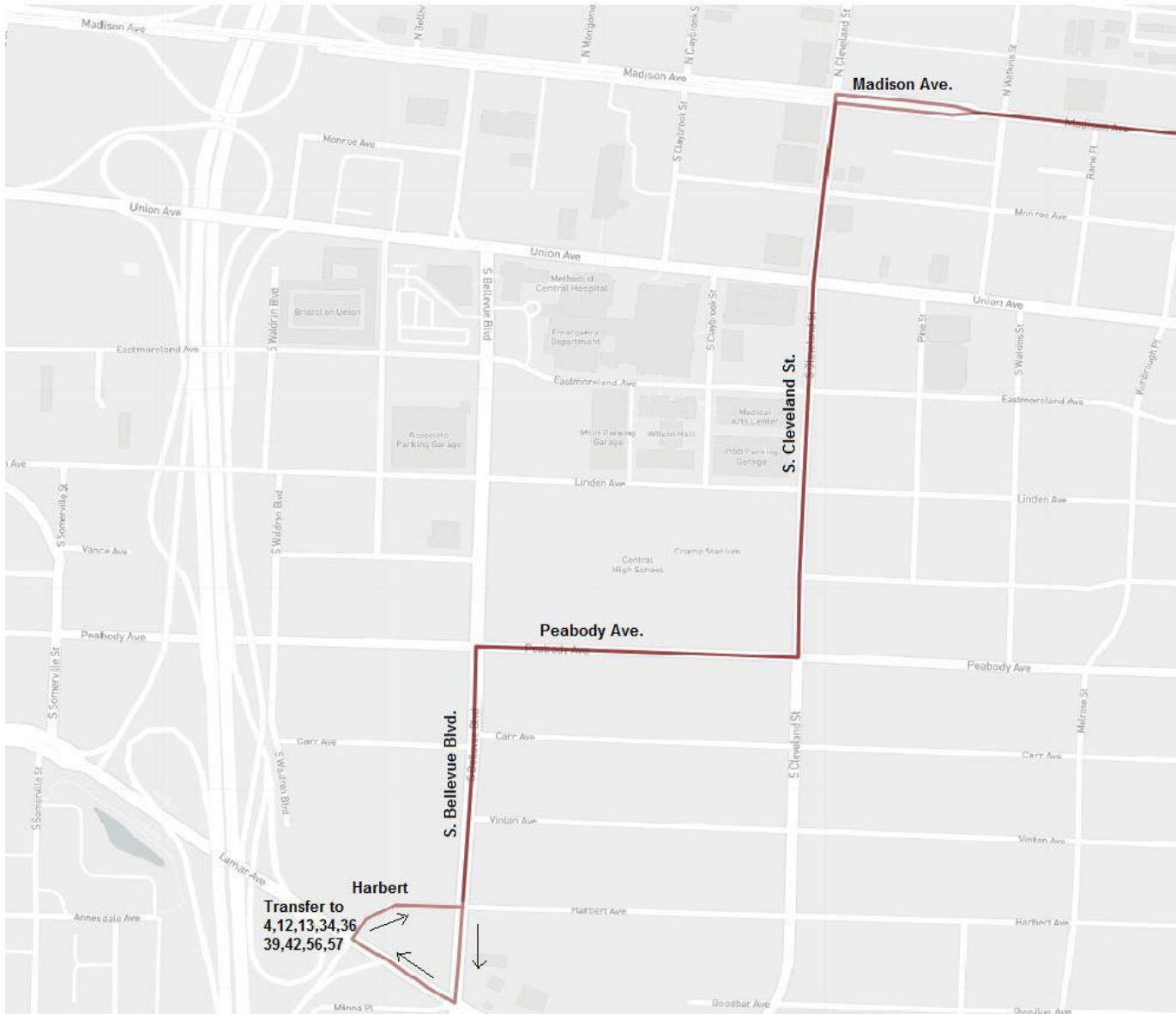
#### Route 1 Inbound

Head west on Union  
Left on Cleveland  
Right on Peabody  
Left on Bellevue  
Right on Lamar  
Right on Harbert

**Connecting routes:**  
**2,4,12,13,34,36,39,42,57**

# St. Jude Marathon Detour

## Route 2 Detour



**Effective: Saturday,**  
December 6, 2025 at 7:00 AM  
to 3:00 PM

### Directions:

#### Route 2 Outbound

Start at Harbert and Bellevue  
Left on Bellevue  
Right on Peabody  
Left on Cleveland  
Right on Madison  
Continue regular route

#### Route 2 Inbound

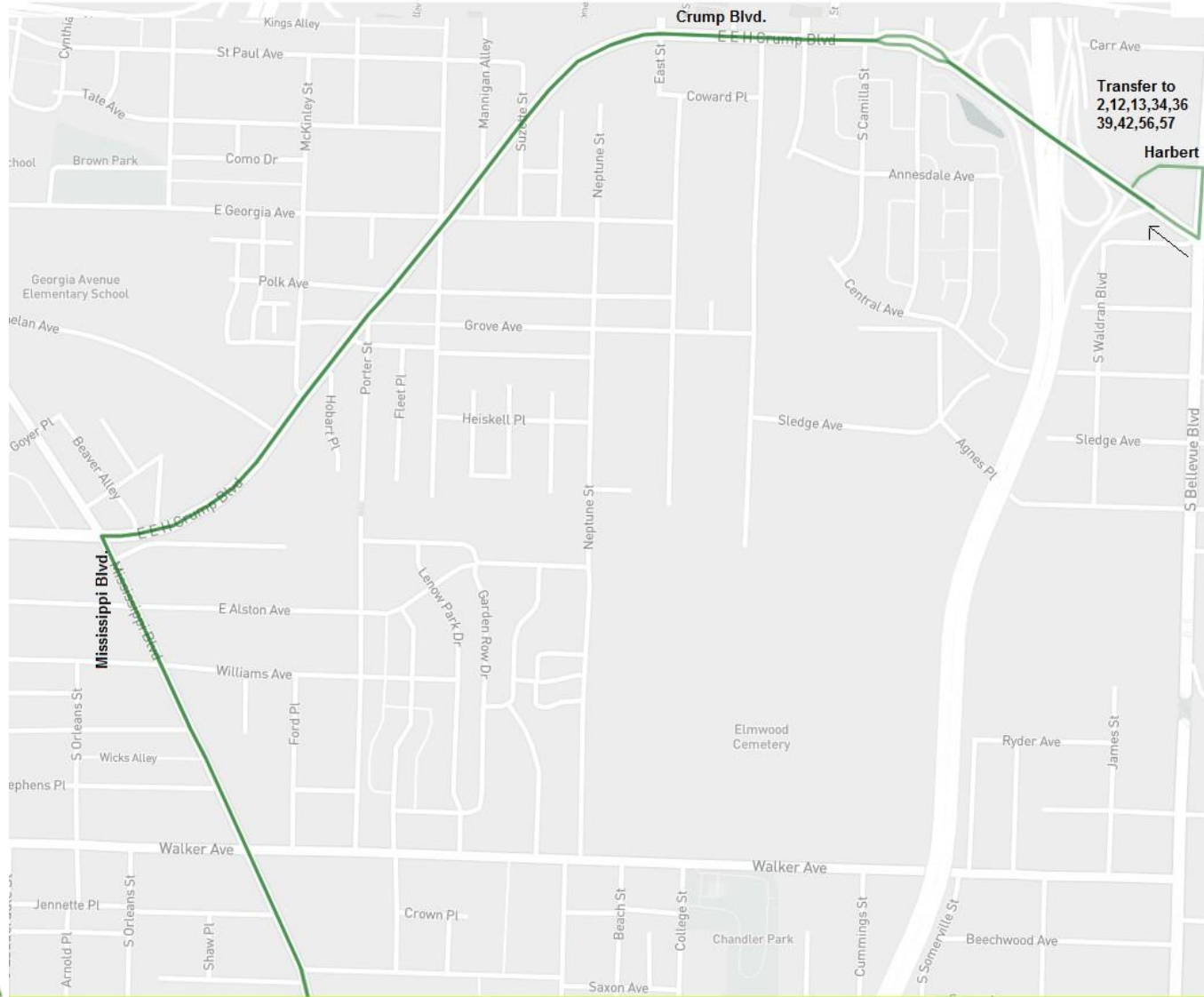
Head west on Madison  
Left on Cleveland  
Right on Peabody  
Left on Bellevue  
Right on Lamar  
Right on Harbert

**Connecting routes:**  
**4,12,13,34,36,39,42,57**



# St. Jude Marathon Detour

## Route 4 Detour



**Effective:** Saturday, December 6, 2025  
at 7:00 AM to 3:00 PM

### Directions:

#### Route 4 Outbound

Start at Harbert and Bellevue  
Right on Bellevue  
Right on Lamar which becomes Crump  
Left on Mississippi  
Continue regular route

#### Route 4 Inbound

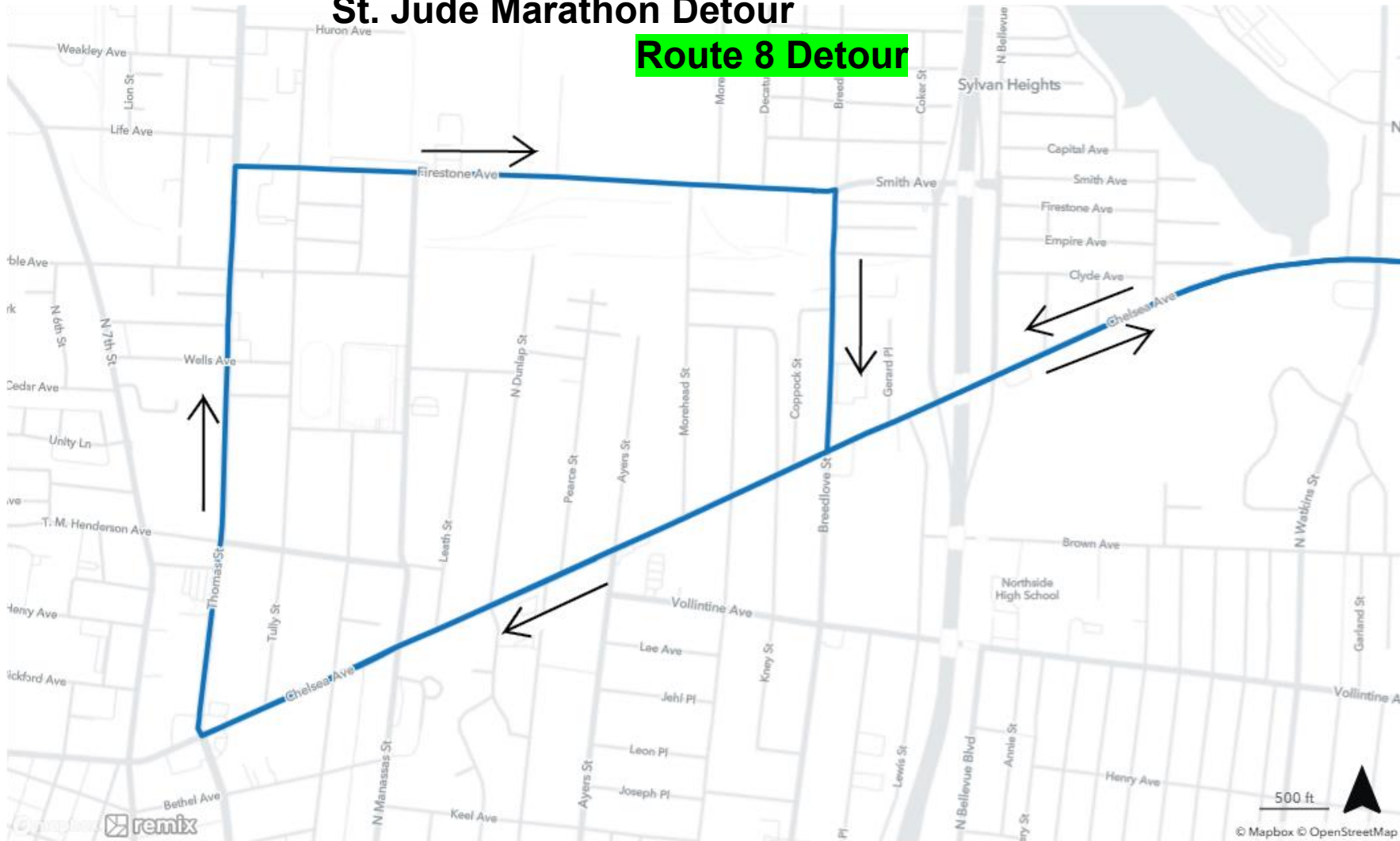
Head north on Mississippi  
Right on Crump which becomes Lamar  
Left on Harbert

### Connecting routes:

**1,2,12,13,34,36,39,42,56,  
57**

## St. Jude Marathon Detour

### Route 8 Detour



**Effective:** Saturday, December 6, 2025 at 7:00 AM to 3:00 PM

#### Directions:

##### Route 8 Outbound

Start at Chelsea at Danny Thomas, Right on Firestone, Right on Breedlove, Left on Chelsea  
Continue regular route

##### Route 8 Inbound

On Regular route but the end point is Chelsea at Danny Thomas.

**Connecting routes: 11 and 40**

**St. Jude Marathon Detour**  
**Route 11 Detour**

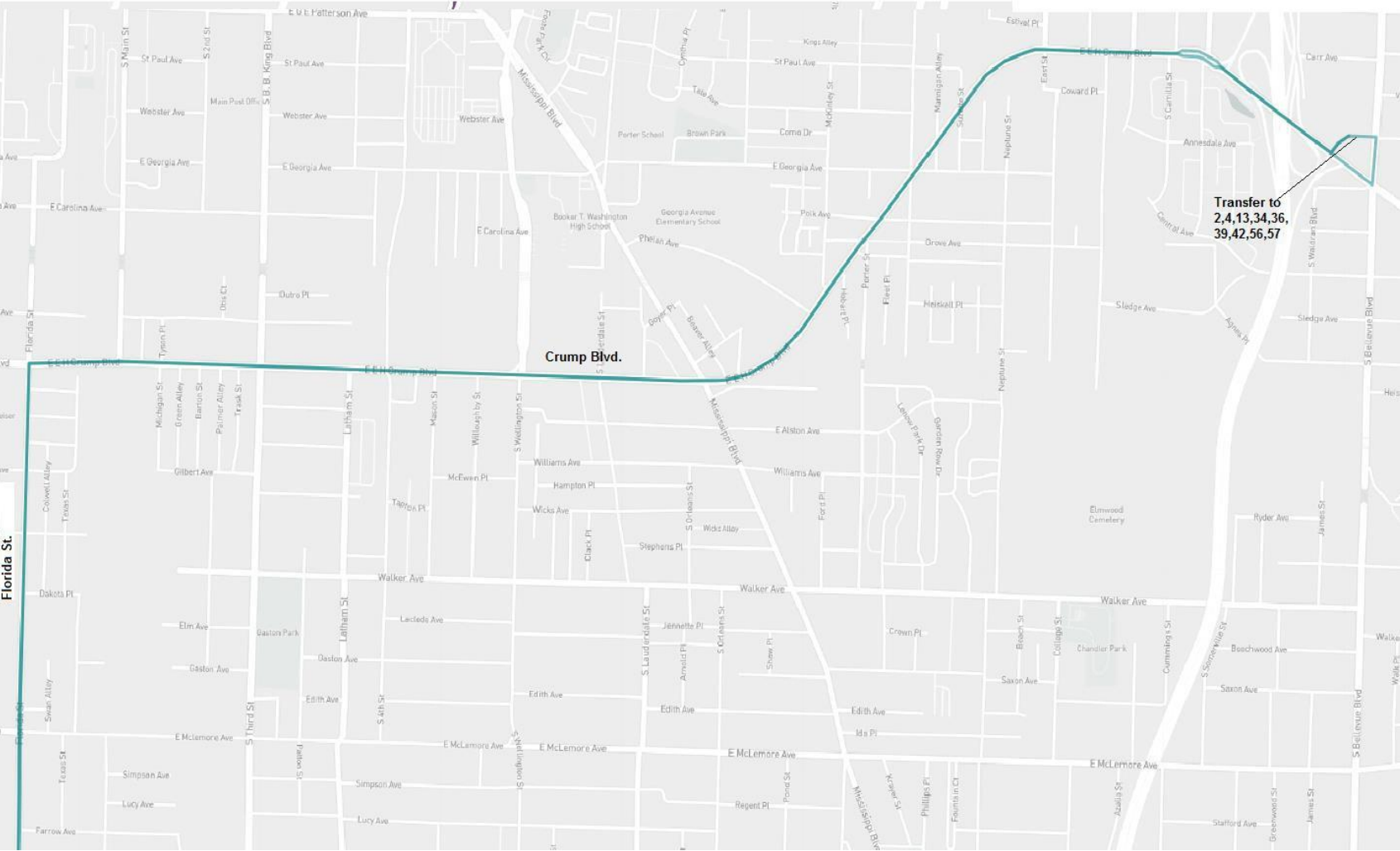
The map displays a detour route for the St. Jude Marathon and Route 11. The detour is marked by a red line and arrows, showing a path that starts on N 2nd St, travels south to Tully St, then east on Chelsea Ave, then north on Morehead St, and finally east on Firestone Ave. The map includes various local streets and landmarks, such as the Mississippi River, Island Club Dr, and the New Chelsea area. A scale bar indicates 1000 feet, and a north arrow is present in the bottom right corner.





# St. Jude Marathon Detour

## Route 12 Detour



**Effective:** Saturday, December 6, 2025  
at 7:00 AM to 3:00 PM

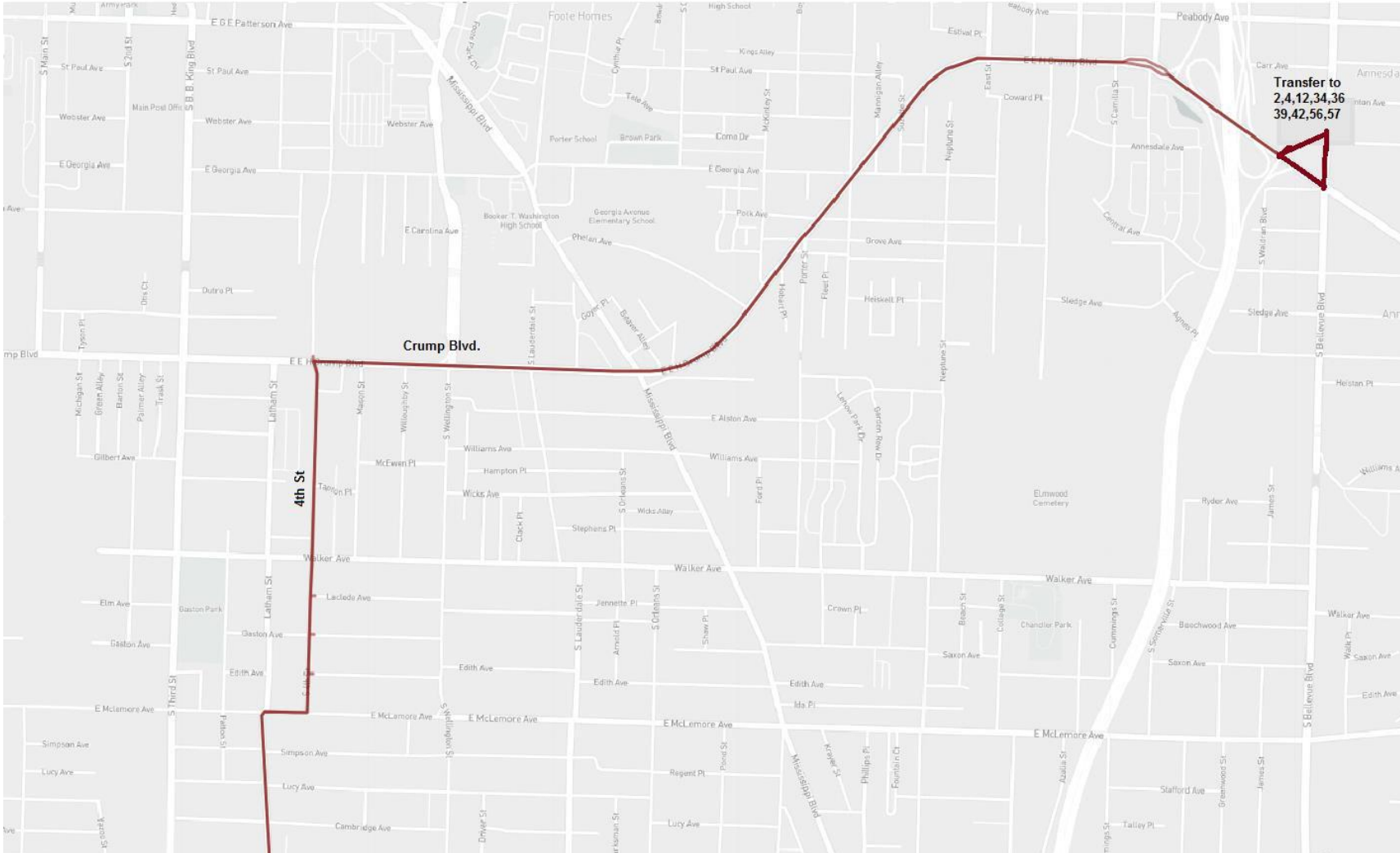
**Directions:**  
**Route 12 Outbound**  
Start at Harbert and Bellevue  
Right on Bellevue  
Right on Lamar which becomes Crump  
Left on Florida  
Continue regular route

**Route 12 Inbound**  
Head north on Florida  
Right on Crump which becomes Lamar  
Left on Harbert

**Connecting routes:**  
**1,2,4,13,34,36,39,42,57**

# St. Jude Marathon Detour

## Route 13 Detour



**Effective: Saturday, December 6, 2025**  
at 7:00 AM to 3:00 PM

### Directions:

#### Route 13 Outbound

Start at Harbert and Bellevue  
Right on Bellevue  
Right on Lamar which becomes Crump  
Left on Fourth  
Continue regular route

#### Route 13 Inbound

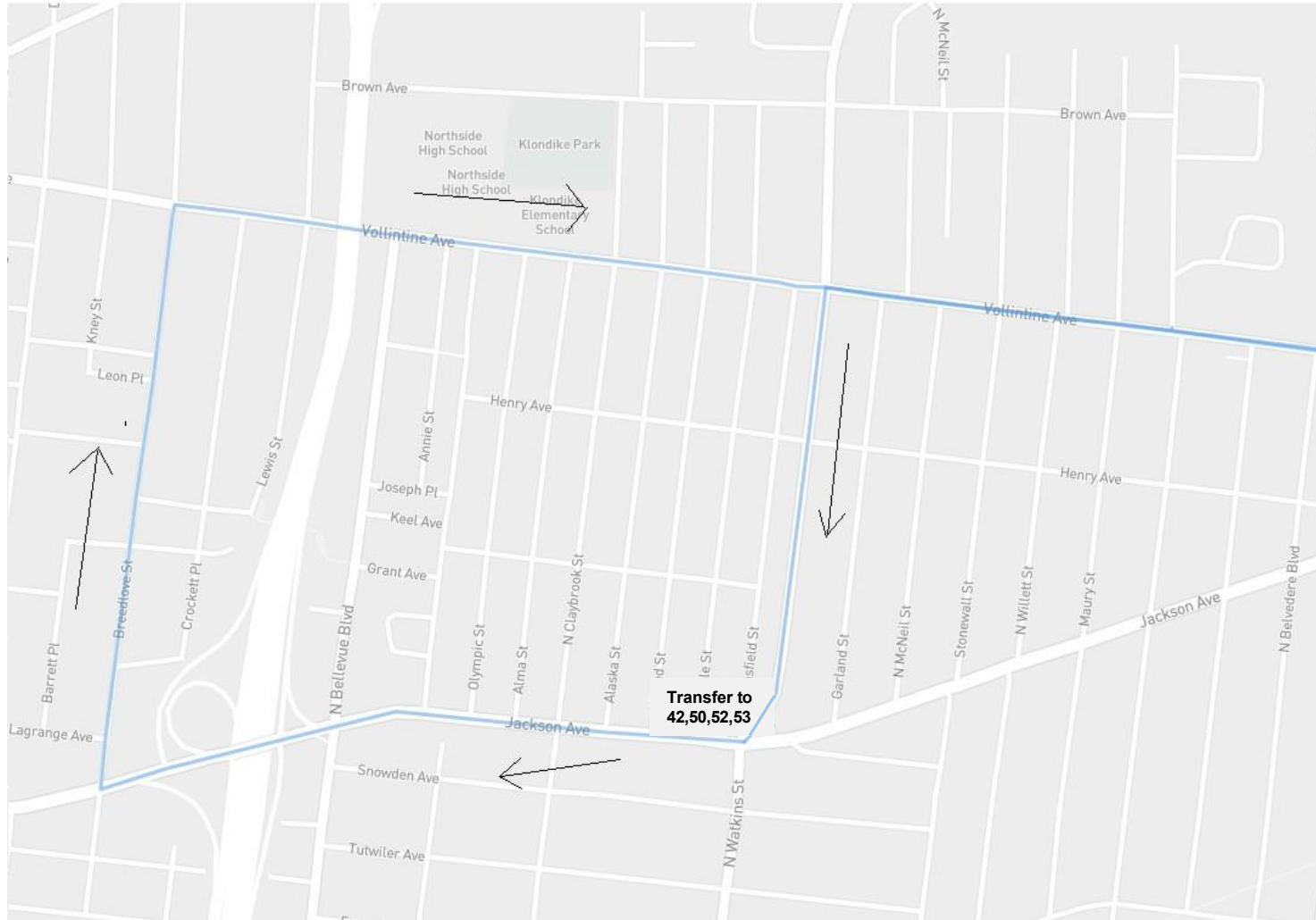
Head north on Fourth  
Right on Crump which becomes Lamar  
Left on Harbert, Change to Line 40,  
Right on Bellevue, Right on Lamar,  
Right I-240 North, Exit Chelsea, Left on  
Chelsea, right on Thomas .

### Connecting routes:

**1,2,4,12,34,36,39,42,57**

# St. Jude Marathon Detour

## Route 19 Detour



**Effective:** Saturday, December 6, 2025 at  
7:00 AM to 3:00 PM

### **Directions:**

#### **Route 19 Outbound**

Start at Watkins and Jackson  
Right on Jackson  
Right on Breedlove  
Continue regular route

#### **Route 19 Inbound**

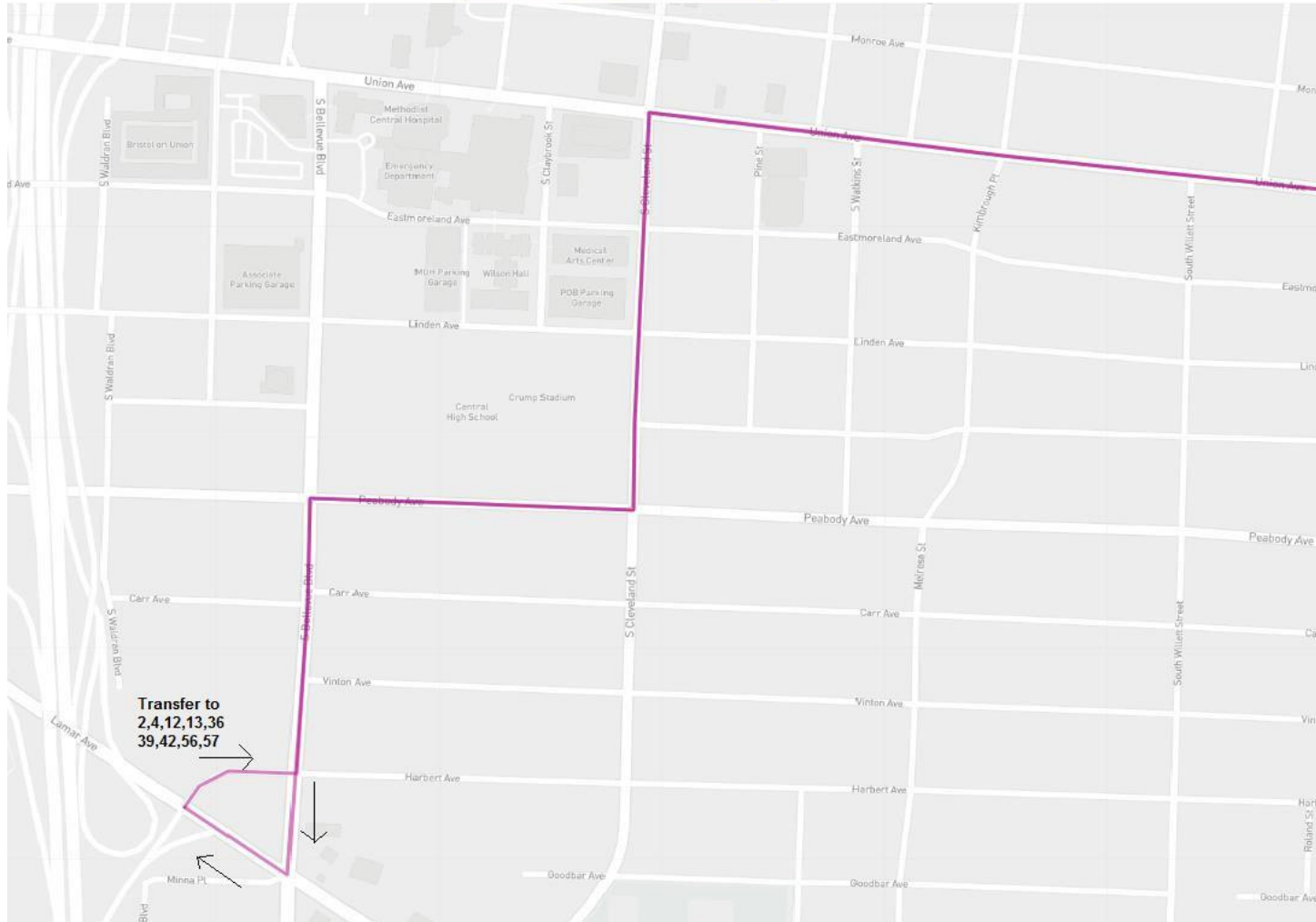
Head west on Vollintine  
Left on Watkins  
Stop at Watkins and Jackson near side

**Connecting routes: 42,50,52,53**



# St. Jude Marathon Detour

## Route 34 Detour



**Effective:** Saturday,  
December 6, 2025 at 7:00 AM  
to 3:00 PM

### Directions:

#### Route 34 Outbound

Start at Harbert and Bellevue  
Left on Bellevue  
Right on Peabody  
Left on Cleveland  
Right on Union  
Continue regular route

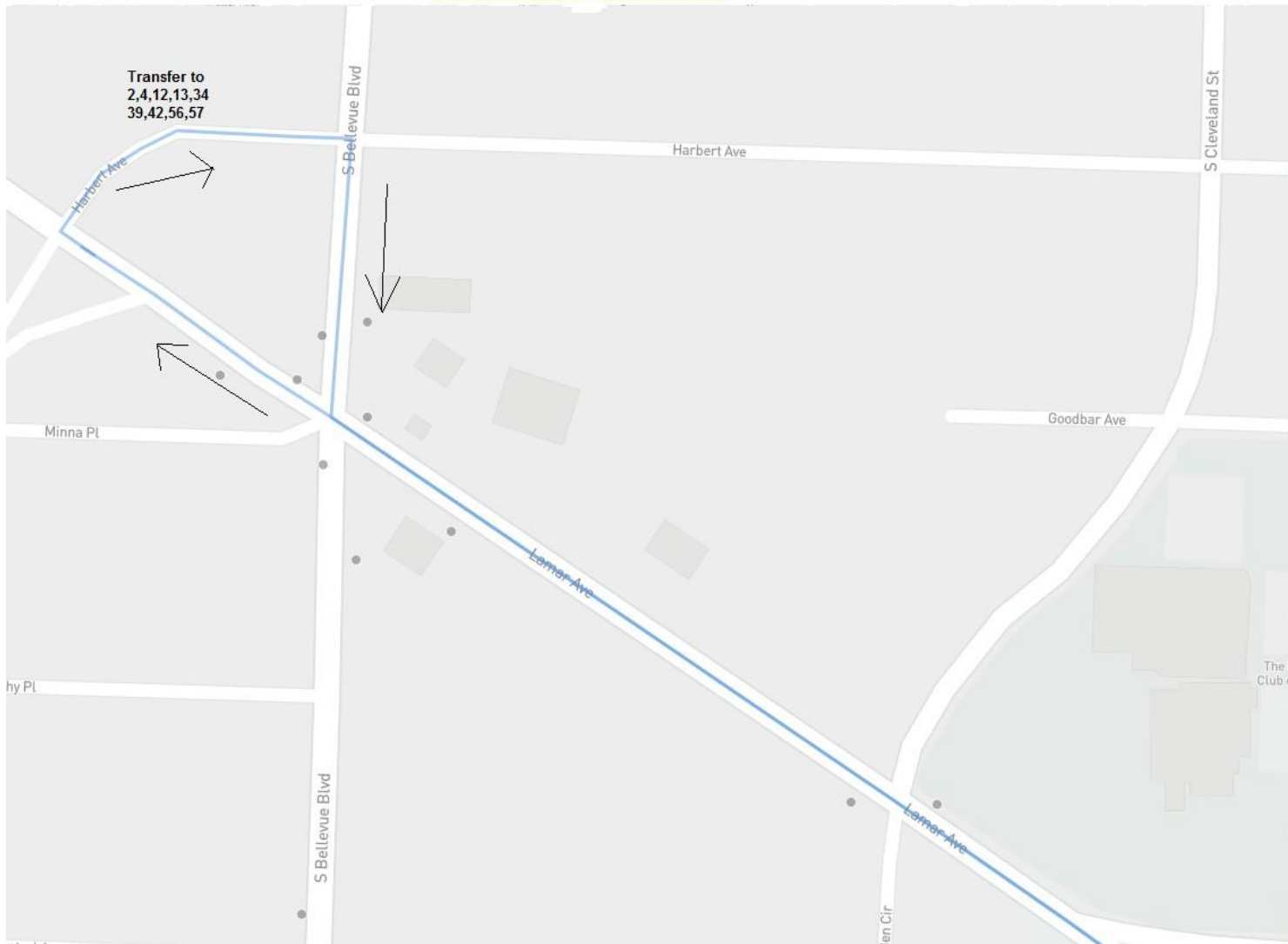
#### Route 34 Inbound

Head west on Union  
Left on Cleveland  
Right on Peabody  
Left on Bellevue  
Right on Lamar  
Right on Harbert

**Connecting routes:**  
**2,4,12,13,36,39,42,57**

## St. Jude Marathon Detour

### Route 36 Detour



**Effective:** Saturday, December 6,  
2025 at 7:00 AM to 3:00 PM

#### **Directions:**

##### **Route 36 Outbound**

Start at Harbert and Bellevue Right  
on Bellevue  
Left on Lamar  
Continue regular route

##### **Route 36 Inbound**

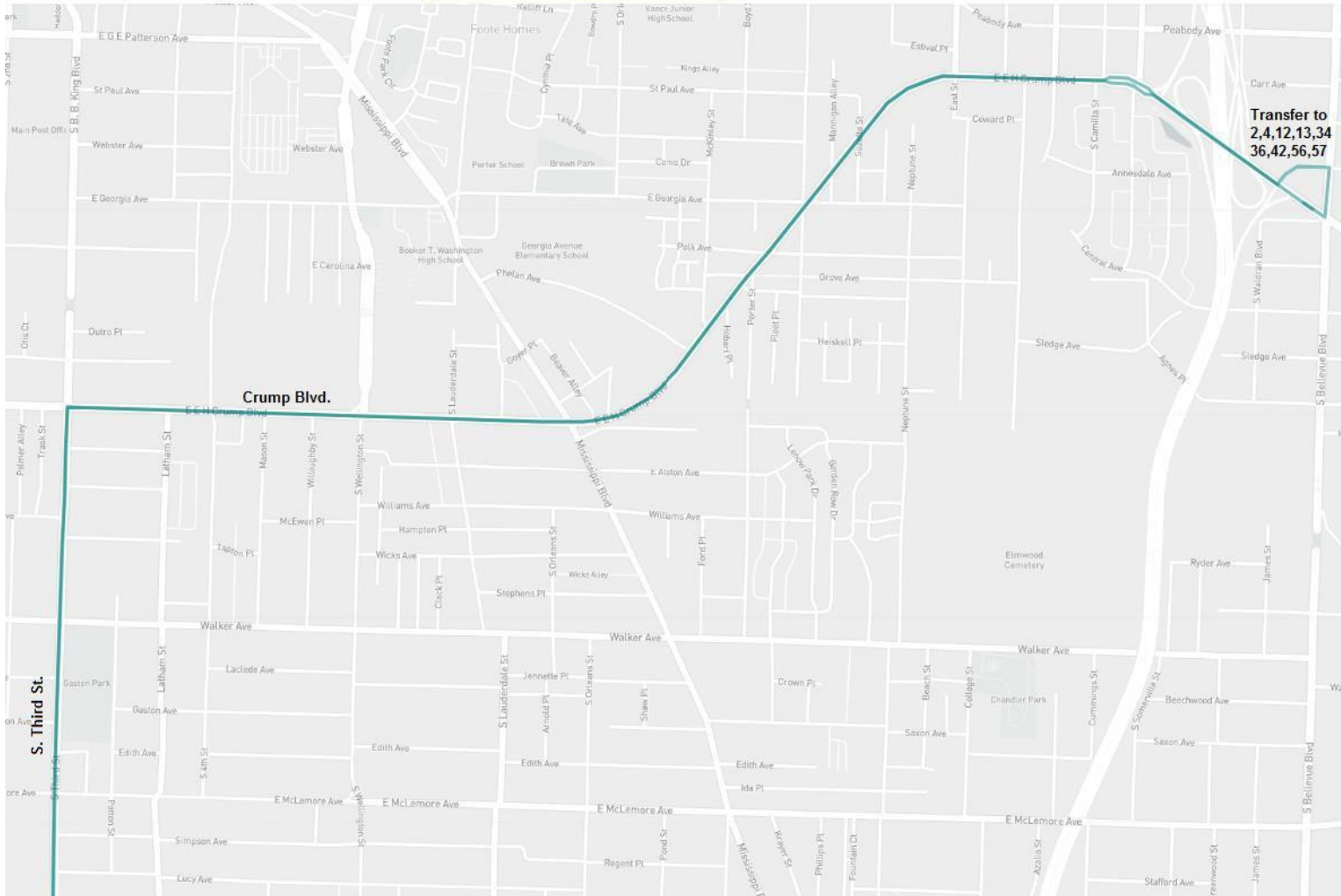
Head west on Lamar  
Right on Harbert

#### **Connecting routes:**

**1,2,4,12,13,34,39,42,57**

## St. Jude Marathon Detour

## Route 39 Detour



**Effective:** Saturday, December 6, 2025  
at 7:00 AM to 3:00 PM

**Directions:**

## Route 39 Outbound

## Start at Harbert and Bellevue

## Right on Bellevue

Right on Lamar which becomes Crump

Left on S. Third

Continue regular route

## Route 39 Inbound

Head north on S. Third

Right on Crump which becomes Lamar

## Left on Harbert

## Connecting routes:

**1,2,4,12,13,34,36,42,57**



# St. Jude Marathon Detour

## Route 40 Detour



**Effective:** Saturday, December 6, 2025  
at 7:00 AM to 3:00 PM

### Directions:

#### Route 40 Outbound

Starting from Chelsea and  
Thomas Right on Firestone  
Right on Breedlove right on Chelsea,  
Right Thomas, Right on Stage  
Continue regular route

#### Route 40 Inbound

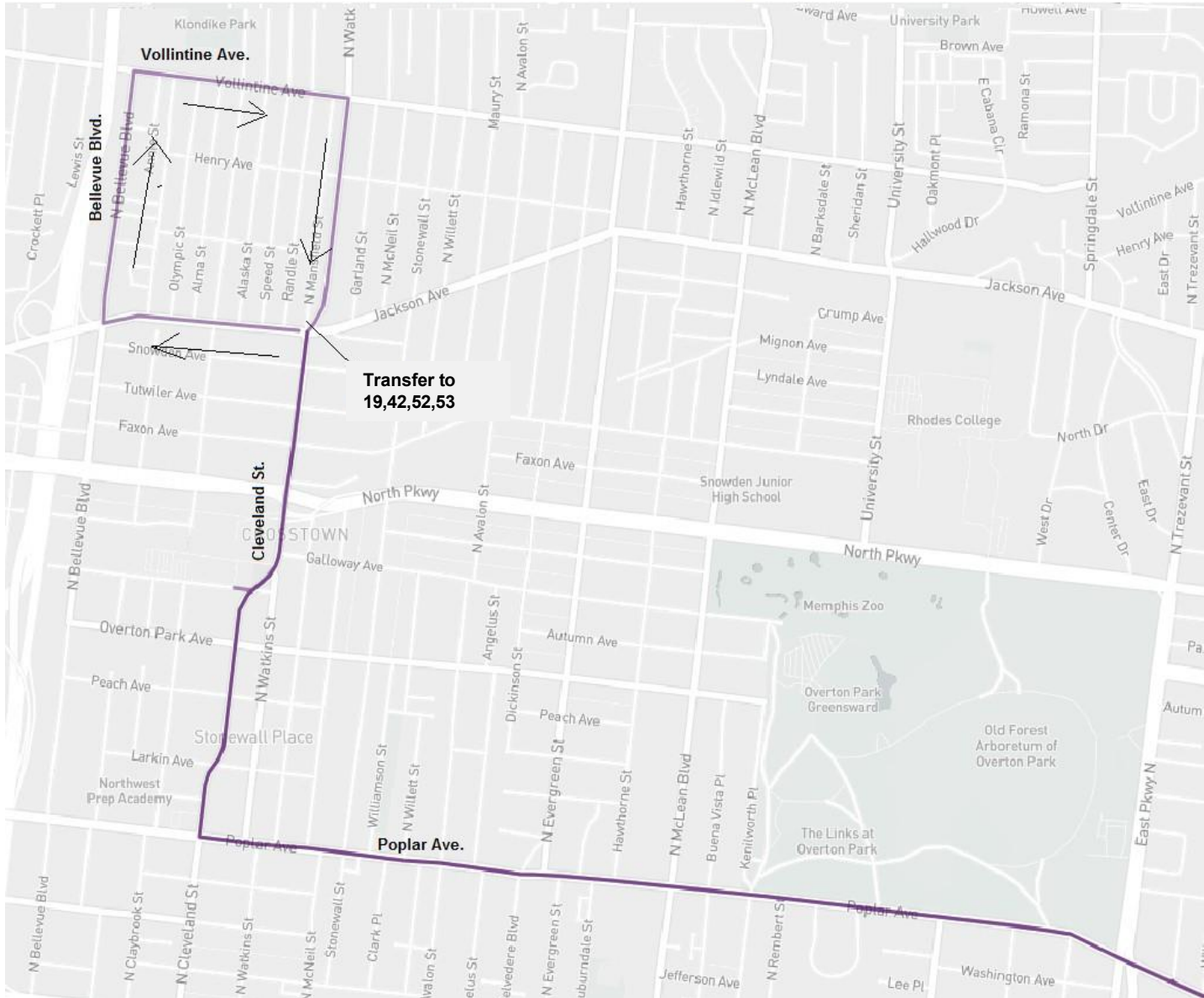
From Stage and Thomas, Right on  
Thomas, Left on Firestone, Right  
Breedlove, Right Chelsea, Right on  
Thomas, Change to Line 13, Right on  
Firestone, Right on Breedlove, Left  
Chelsea, Right I-240 south, Exit  
Lamar/Crump Left on Lamar, Left on  
Harbert, /right Bellevue.

### Connecting routes:

**2,4,12,13,34,36,42,57**

# St. Jude Marathon Detour

## Route 50 Detour



**Effective:** Saturday, December 6, 2025 at  
7:00 AM to 3:00 PM

### Directions:

#### Route 50 Outbound

Start at Watkins and Jackson  
Head south on Watkins which  
becomes Cleveland  
Left on Poplar  
Continue regular route

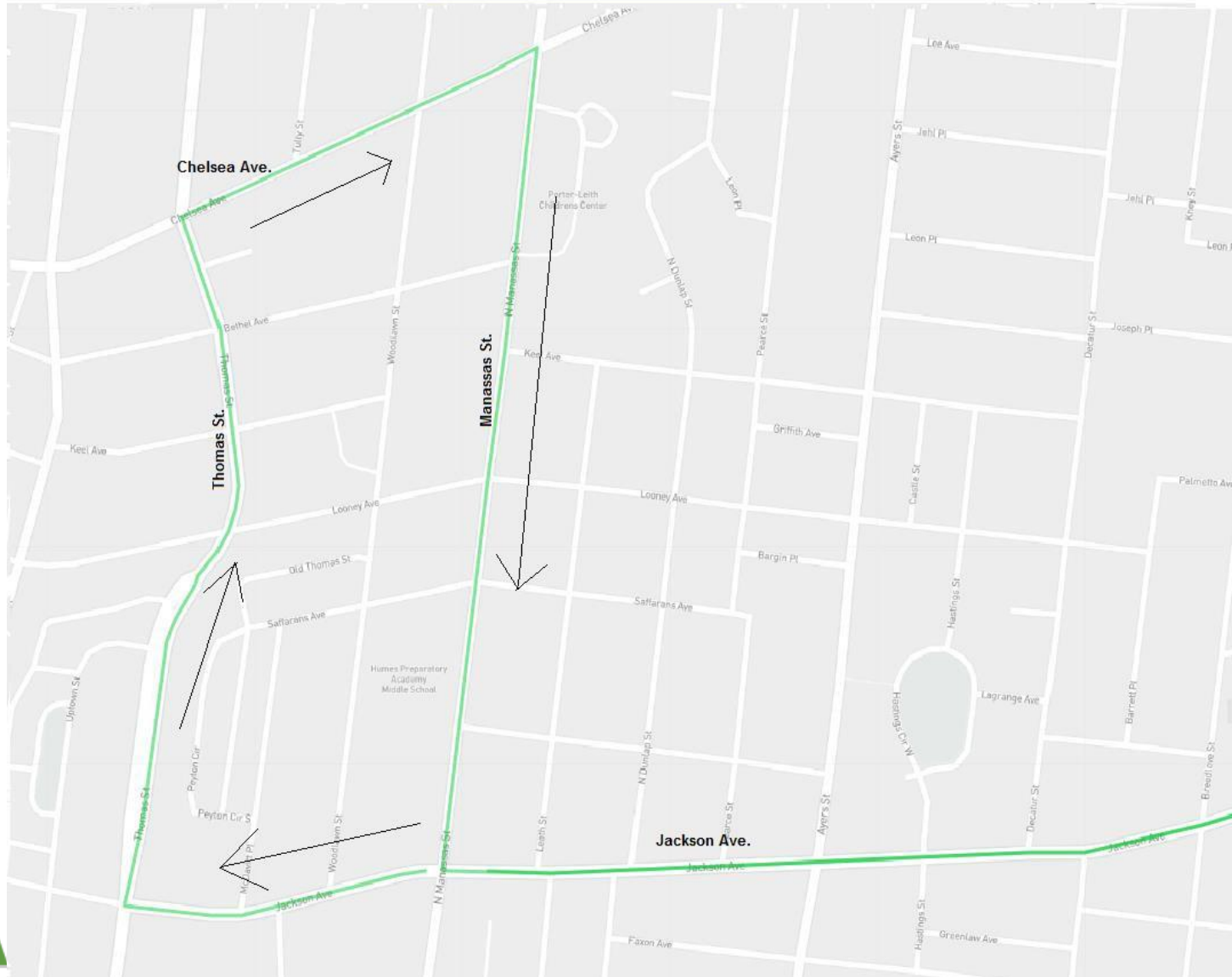
#### Route 50 Inbound

Head west on Poplar  
Right on Cleveland which becomes  
Watkins  
Left on Jackson  
Right on Bellevue  
Right on Vollintine  
Right on Watkins  
Stop at Watkins and Jackson near side

**Connecting routes: 19,42,52,53**

# St. Jude Marathon Detour

## Route 52 Detour



**Effective:** Saturday, December 6, 2025  
at 7:00 AM to 3:00 PM

### Directions:

#### Route 52 Outbound

Start at Manassas and Jackson  
Left on Jackson  
Continue regular route

#### Route 52 Inbound

Head west on Jackson  
Right on Thomas  
Right on Chelsea  
Right on Manassas  
Stop at Manassas and Jackson near  
side

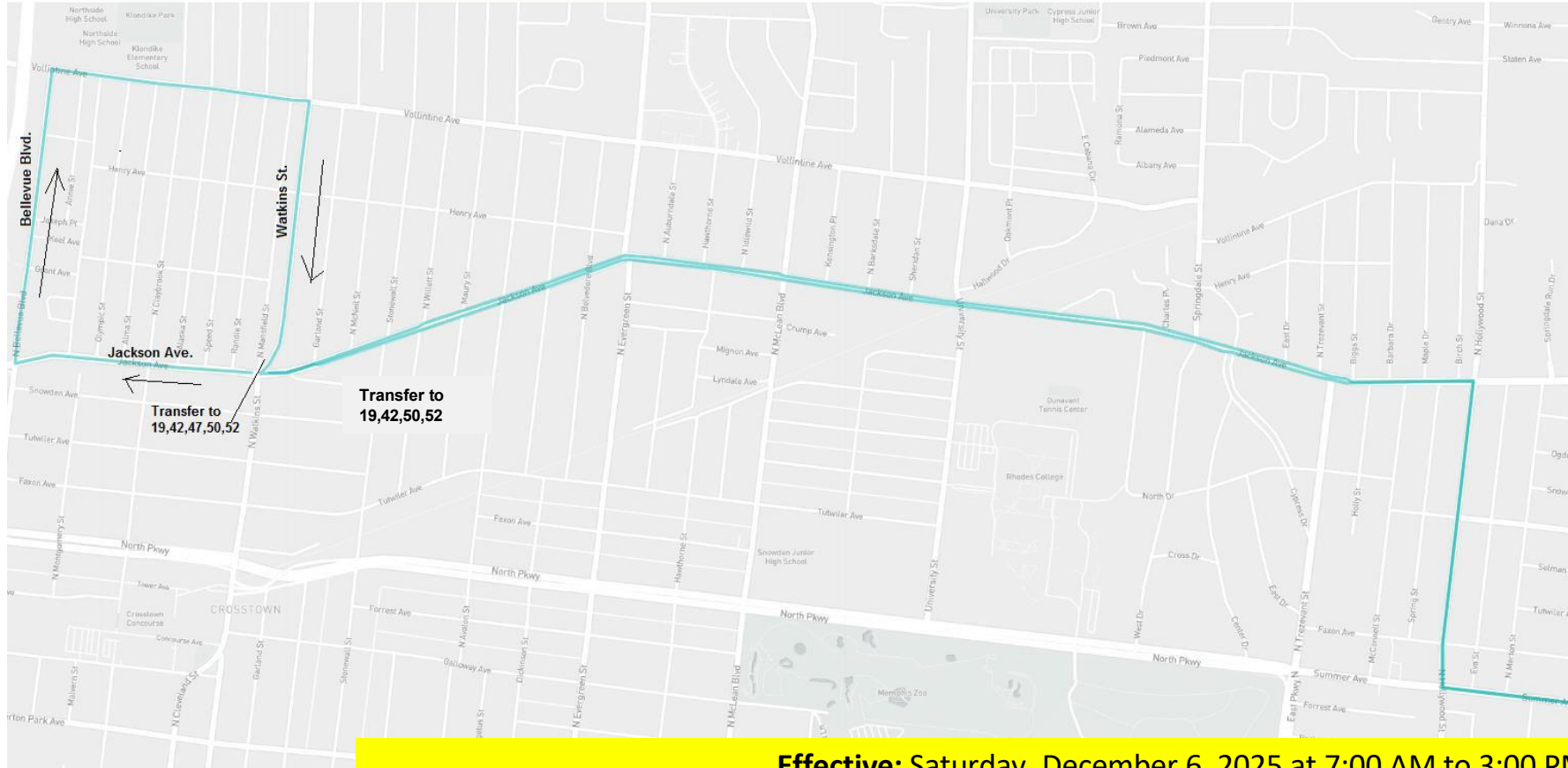
### Connecting routes:

**19,42,50,53 (at Jackson and Watkins)**



# St. Jude Marathon Detour

## Route 53 Detour



**Effective:** Saturday, December 6, 2025 at 7:00 AM to 3:00 PM

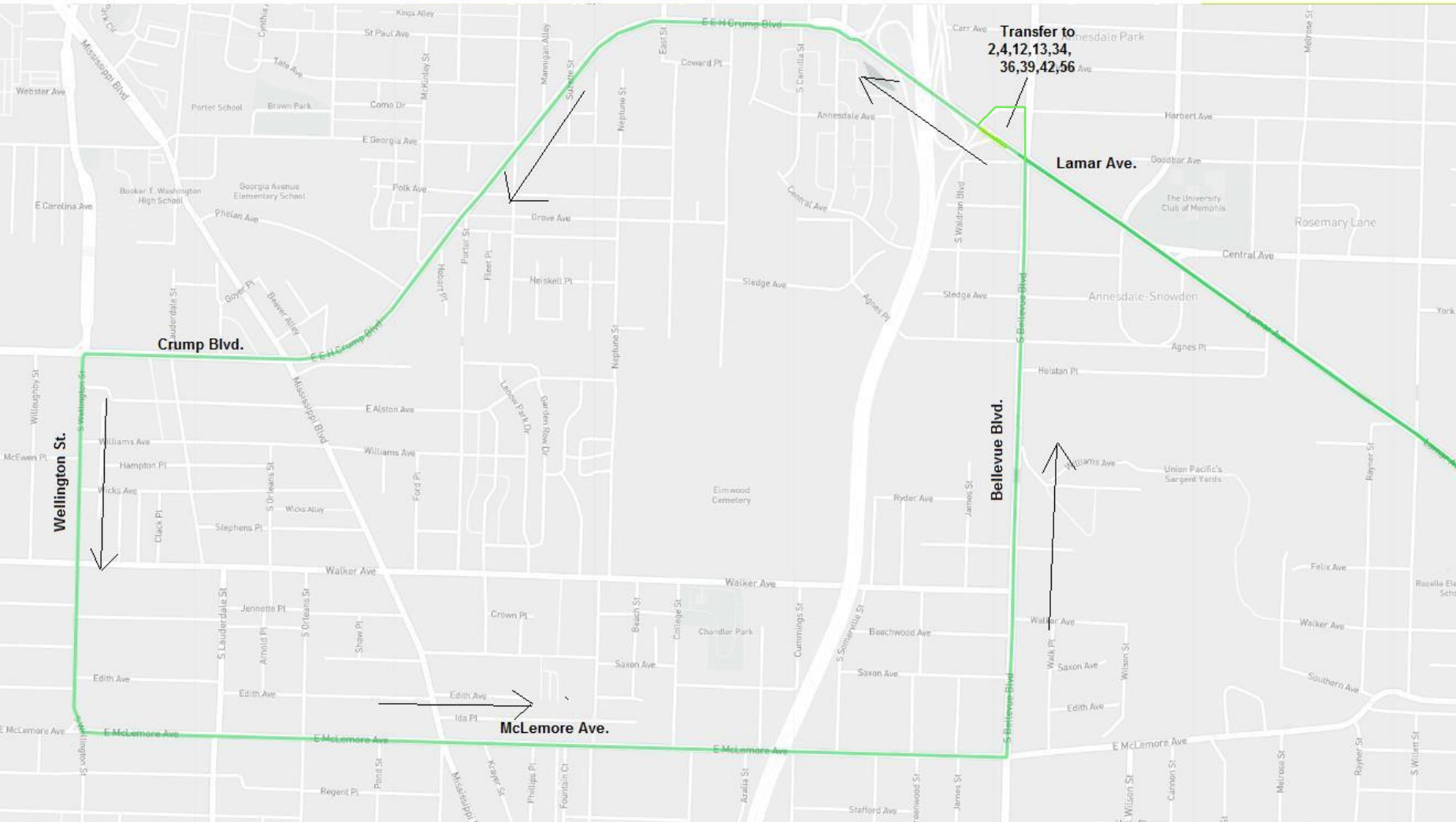
**Directions: Route 53 Outbound:** Start at Watkins and Jackson, Left on Jackson, Right on Hollywood, Left on Summer, Continue regular route

**Route 53 Inbound:** Head west on Summer, Right on Hollywood, Left on Jackson, Right on Bellevue, Right on Vollintine, Right on Watkins, Stop at Watkins and Jackson Near Side

**Connecting routes:** 2,4,12,13,34,36,39,42,57

# St. Jude Marathon Detour

## Route 57 Detour



**Effective:** Saturday, December 6, 2025  
at 7:00 AM to 3:00 PM

### Directions:

#### Route 57 Outbound

Start at Harbert and Bellevue  
Right on Bellevue  
Right on Lamar which becomes Crump  
Left on Wellington  
Continue regular route

#### Route 57 Inbound

Head west on Lamar  
Right on Harbert

### Connecting routes:

**1,2,4,12,13,34,36,39,42**