

# St. Jude Trike-A-Thon

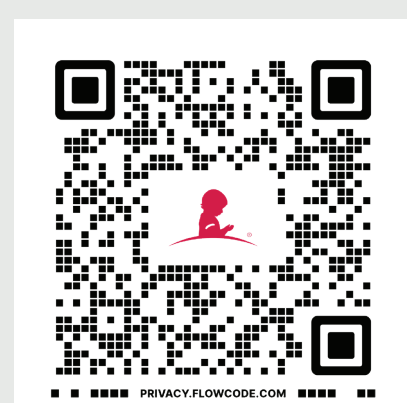
You're never too small to make a BIG impact. **Let's ride for St. Jude!**

Your St. Jude Trike-A-Thon school contact is:

Event date: \_\_\_\_\_

Time: \_\_\_\_\_

Donations due by: \_\_\_\_\_

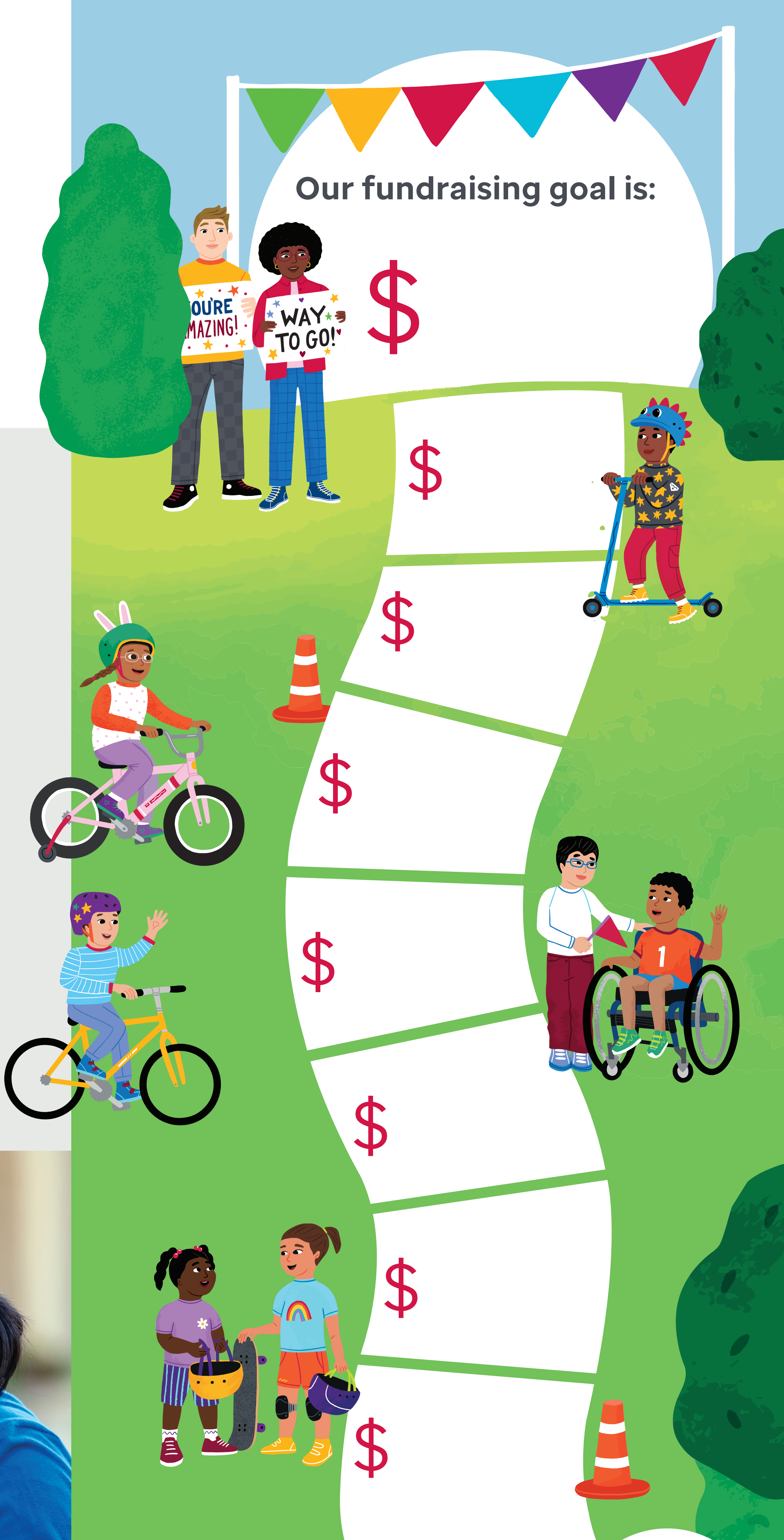


Register today and personalize  
your online fundraising page at

**stjude.org/trike**



St. Jude patient **Aspen**, cancerous tumor  
pictured with her family



St. Jude Children's  
Research Hospital

## St. Jude Trike-A-Thon

### Track your Trike fundraising:

1. Mark your goal at the top of this tracker.
2. Add milestones along the way to show your class progress.
3. Color-in a sidewalk square once a milestone is hit.

**TIP:** Make it a classroom activity by taking turns completing a square or use stickers for every dollar raised!

Need help  
setting a goal?  
Visit **stjude.org/trike**  
to learn about your  
class' impact and  
St. Jude Gifts  
that Give.