




## *The New Digital Signage Board*



We are delighted to showcase the new digital signage board that is stationed directly outside the Family, Guest and Volunteer Services office. This digital signage board is a great resource for our volunteers as it helps keep them updated and aware of any relevant information. There are many features on the digital signage board that volunteers can use everyday. Volunteers can read *St. Jude Today* posts to help them informed of what's occurring on campus daily, they can read current and future weather conditions, and also read volunteer spotlights and volunteer-related events.

## *In Club News*



### The St. Jude Auxiliary Club

The St. Jude Auxiliary Club worked very hard to prepare for their annual Bazaar and Silent Auction, which was held in November. During this time, club members raised \$39,735.39.

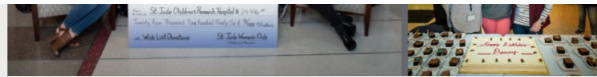
The proceeds raised during the event will benefit the patients of St. Jude.

Thank you to the club members for all of your hard work!

## THE WOMEN'S CLUB

The Women's Club hosted a variety of events during the holiday season. An elf event was held where club members dressed as Santa's elves and assisted patients and siblings with crafts. The club also hosted Founder's Day, which celebrated Danny Thomas' birthday.





## The Ladies of St. Jude

At the club's holiday luncheon, members presented a generous check donation that directly benefits the patients of St. Jude.  
Thank you to the Ladies for all of your generosity!



## Patient Family-Centered Care

### Parent to Parent Support



In January, parent advisers hosted St. Jude 101. This informal gathering held by parent advisers welcomes and invites St. Jude families to learn more about the resources offered at the hospital, as well as to voice concerns. St. Jude 101 was held at Tri Delta Place and had a great turn-out with 20 parents in attendance. Five new parent advisers were recruited and trained for PFCC Initiatives such as the Patient Family Advisory Council and the Quality of Life Stay in Touch program.

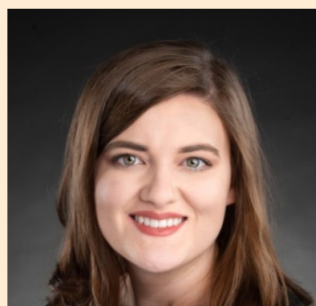


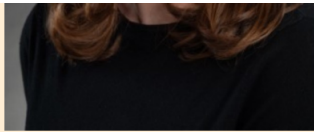
Both the Patient Family Advisory Council and Quality of Life Steering Council had their first meetings of the year. A variety of departments presented to parents in hopes of receiving feedback from the patient-family perspective.

A recruitment table was held outside the Kay Kafe by parent advisers to encourage parent engagement and raise staff awareness about Patient Family-Centered Care.

We have purchased a new virtual advisory platform. Though still in the early stages of development, this platform is expected to be a powerful asset, as it will allow virtual parent advisers to engage in more ways than before.

### Welcome Hannah Crain to Patient Family-Centered Care





Please welcome our newest team member, Hannah Crain, as the Patient Family-Centered Care coordinator. Hannah joined the Family, Guest and Volunteer Services department in late November. A Memphis native, she previously worked at the Pink Palace Museum. She has her Bachelor of Science degree in psychology from the University of Memphis. Hannah says she is elated to bring her knowledge, hope, and passion to St. Jude as she works closely with staff, patients, and families.

Hannah says her favorite thing about Memphis is the culture displayed through the art, music, food and sports. In her spare time, Hannah enjoys playing musical instruments such as the piano, saxophone and ukelele.

Hannah says she looks forward to her future at St. Jude and the genuine connections she will make with staff, patients and families. "Whether I can help in small or big ways, I want to be the person you can count on," Hannah said.

**We are happy to have Hannah on our team!**

